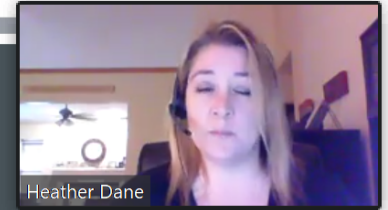
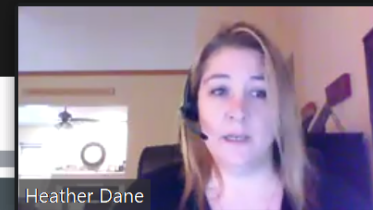


## DAILY LIFE & EMPLOYMENT



*What a person does as part of their everyday life- school, employment, volunteering, communication, routines, and life skills.*

Infancy	What kind of play activities do you and baby do that they respond well to?
Early Childhood	Does the child attend preschool? If so, for how many days/hours?
School Age	What do you want to be when you grow up?
Transition	Do you have responsibilities at home such as laundry, dishes, etc?
Adulthood	Do you have a job? If not, what kind of job would you like to have?
Aging	Do you or would you like to get involved in senior activities in the community?

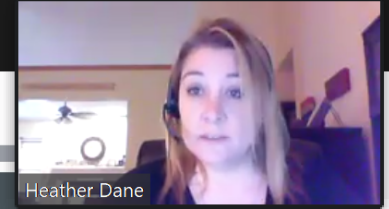


## COMMUNITY LIVING



*Where and how someone lives – housing and living options, community access, transportation, home adaptation and modification*

Infancy	Does the new diagnosis affect ability to stay in current residence?
Early Childhood	Is the child involved in any community activities such as Gymboree or library programs?
School Age	Is there a favorite place in the home for homework, quiet time, calming down?
Transition	Where would you like to live once you are out of school?
Adulthood	How do you get places (i.e. drive, ride bus, friends, family, staff, etc)?
Aging	Do you need home modifications to remain safe in home?



## SAFETY & SECURITY



*Staying safe and secure – finances, emergencies, well-being, decision making supports, legal rights and guardianship*

Infancy	Is the home baby proofed?
Early Childhood	Do you have a plan in case of emergency (i.e. fire, tornado, etc.)?
School Age	Are you teaching the child skills for self advocacy such as being able to say no to unwanted touch?
Transition	Who do you go to when you need to make an important decision?
Adulthood	How is your monthly budget going?
Aging	What are your end of life wishes and is that documented?



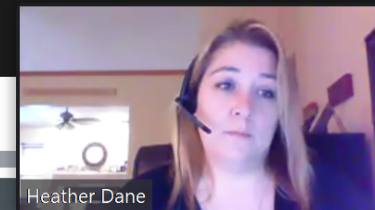
Heather Dane

## HEALTHY LIVING



*Managing and accessing health care and staying well – medical, mental health, behavior, developmental, wellness and nutrition*

Infancy	Do you know the developmental milestones and where to go for help if needed?
Early Childhood	Do you have a medical home?
School Age	Do you like to play sports or play outside?
Transition	Are you working with your doctors to transition to adult care?
Adulthood	Are you able to manage your own medications?
Aging	Are you staying as physically active as possible?



## SOCIAL & SPIRITUALITY



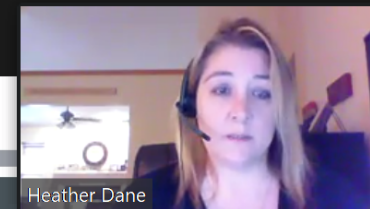
*Building friendships and relationships, leisure activities, personal network and faith community*

Infancy	Are you finding ways to relax and renew yourself so that you can take better care of baby?
Early Childhood	Are you including the child in your family traditions?
School Age	Are you involved in any extracurricular activities at school or in the community?
Transition	Are you dating or wanting to date?
Adulthood	How do you make new friends and maintain old ones?
Aging	What hobbies do you have?



You are viewing Kim Opsahl's screen

View Options ▾



Heather Dane

## ADVOCACY & ENGAGEMENT



*Building valued roles, making choices, setting goals, assuming responsibility and driving how one's life is lived.*

Infancy	Are you connected to other parents who share your experiences?
Early Childhood	Are you encouraging your child to make choices (food, clothing, etc.)
School Age	Do you follow the rules at home/school?
Transition	Are you involved in decision making meetings such as IEP committee meetings?
Adulthood	Are you registered to vote?
Aging	Are you interested in volunteering?



Unmute



Start Video



Participants 45



Chat



Share Screen



Record



Reactions

Leave